

Avenue 66

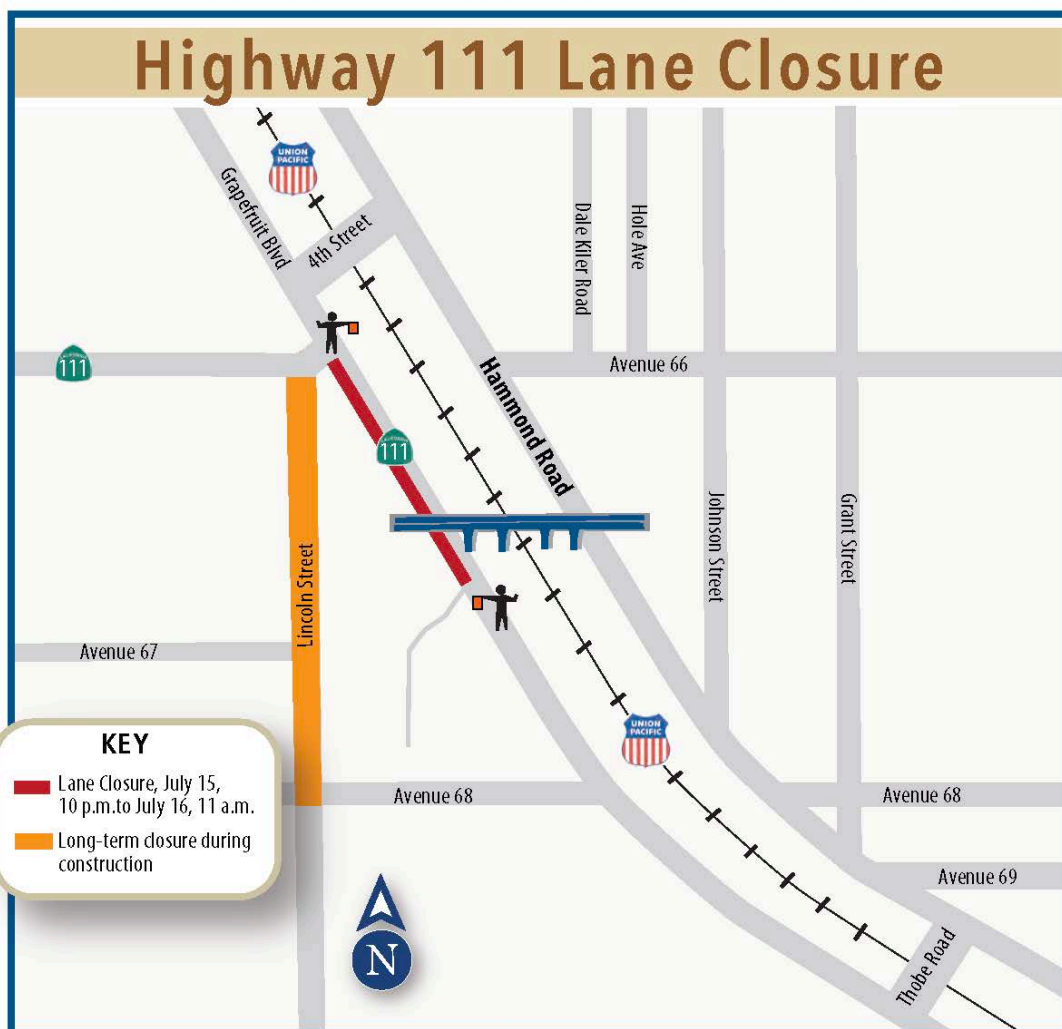
GRADE SEPARATION

NIGHTTIME LANE CLOSURE: Highway 111 near Avenue 66

Thursday night July 15, 10 p.m
through Friday morning, July 16, 11 a.m.



- Plan for a single lane closure on Highway 111 near Avenue 66.
- A flagging operation will assist vehicles through the closure, plan for delays.
- The closure is necessary during the Avenue 66 bridge deck concrete placement. Expect large construction vehicles entering and existing the construction zone.



Sign-up to receive English/Spanish email or text updates at Ave66project.com

877.283.0066 | #Ave66   

